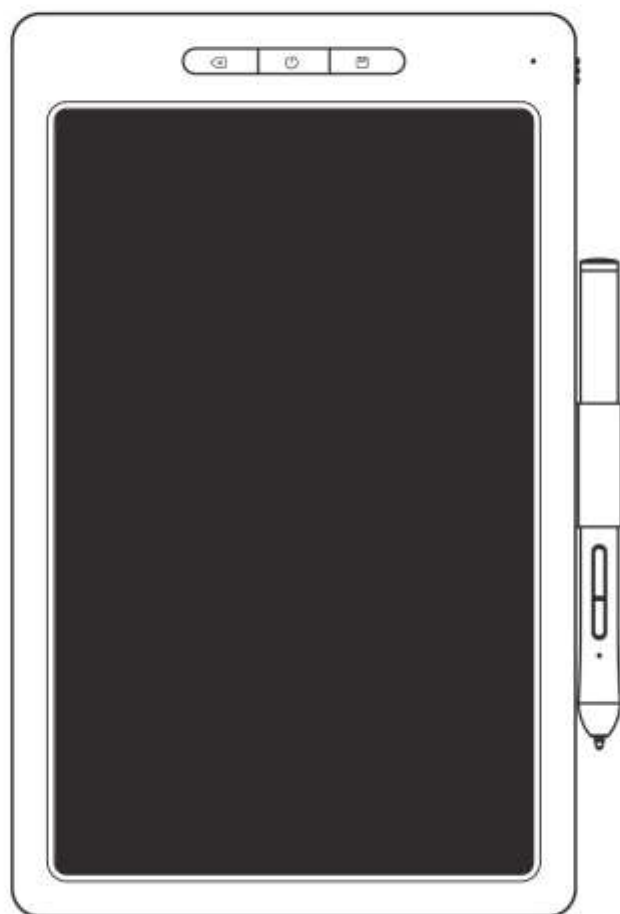




# Graphics Tablet and Digital Notepad User Manual

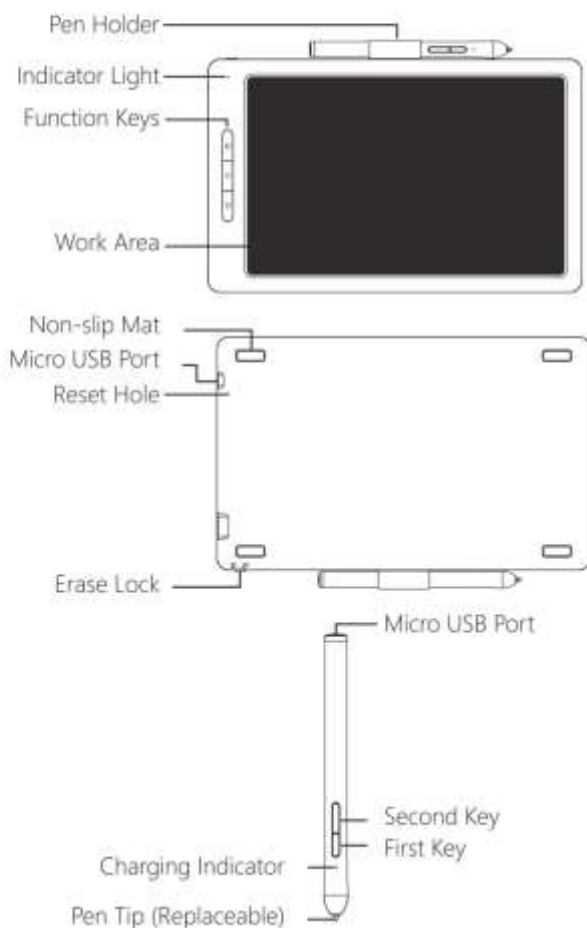
( Ver.1.6 )





## I .Product Overview

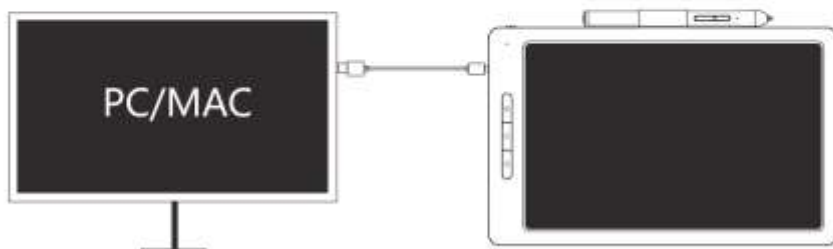
This product can be connected to the computer through the USB cable, with the function of handwriting input, it can be online teaching with the teaching software;It also has the function of pressure sensing. With the appropriate drawing software, the handwriting will change thickness as you control the pressure applied by the pen. It allows you to simulate the strokes of pencils, markers, watercolors, brushes and oil brushes. You can also connect to your phone via bluetooth to achieve synchronous drawing and handwriting playback in the eDraw APP.





Item		Computer	Phone/Tablet
System Requirement		Windows 7 or above Mac OS 10 or above	Android 4.3 or above iOS 9.0 or above
Software Download		Graphics Tablet Driver	eDraw APP
Connection Type		USBCable	Bluetooth
Tablet	Work Indicator	Yellow	Green
		Default PgUp , customizable in the driver	Keep Pressing 1s to save
		Default Ctrl+E , customizable in the driver Keep pressing 3s to power on	Keep pressing 3s to power on/off
		Default PgDn , customizable in the driver Double-click , clear screen	Double-click , clear screen
Pen	Second Key	Default right mouse , customizable in the driver	Thin
	First Key	Default E , customizable in the driver	Thicken
RESET		Try to reset the device by inserting a pin into the "RESET" hole for 3 seconds when the device not respond.	

## II. Graphics Tablet Driver Quick Guide



( Windows 7 or above/Mac OS 10 or above )



## 1. How to download and install the Driver

Download the driver of graphics tablet through the link below:  
<http://9612.mysoncloud.com>



Please select the right driver version according to your computer system.

### Windows installation:

- 1 Please make sure that there is no driver of other brand's graphic tablet in your computer.
- 2 Close all painting software and anti-virus software before installation.
- 3 Double-click to run the driver, and click next step in turn according to the prompt.
- 4 Restart the computer after the driver installed.



### Mac installation:

- 1 Double-click to run the driver in your download file, and click next step in turn according to the prompt. Then Go -Applications here is Graphics Tablet Driver.



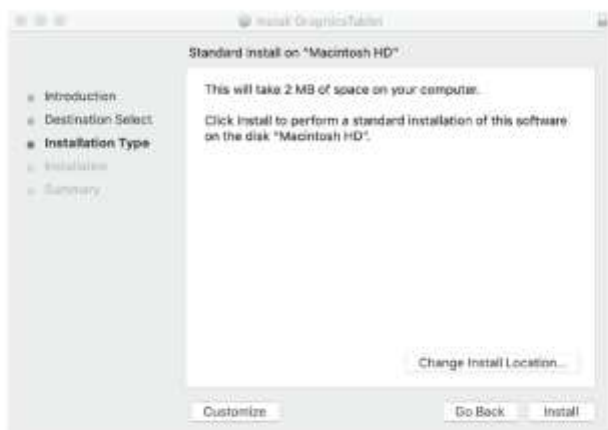
**a** Click "Continue"



**b** Click "Continue"



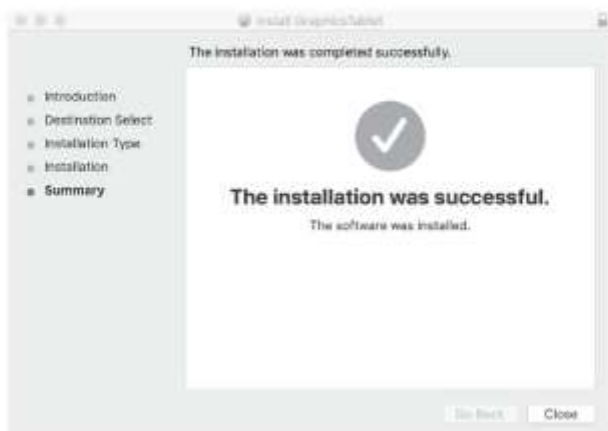
**c** Click "Install"



**d** Enter your Password, and then click the “Install Software”

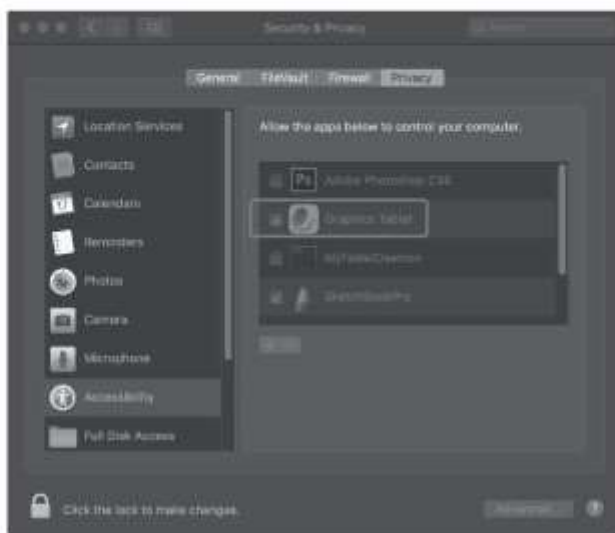


**e** Click “Close”





- 2 Please check the System Preferences - Security & Privacy - Privacy, and allow Graphics Tablet to control your computer.



### Note:

- Please uninstall other graphic tablet' s driver and restart the computer before install the driver of ours.
- Just install the driver with the guidance of default prompt. Don' t change any settings, or the there will be something wrong in running.
- During the process of installation, it may blocked by the firewall for a few times. Please choose "install this program software" to continue.

## 2. How to connect

- 1 Press "⏻" for 3 seconds to power on the tablet and run the driver.
- 2 Connect the tablet and computer with the cable included.



- 3 The icon in taskbar will become colorful from gray when the connection established. The driver interface displays 'The graphics tablet is connected'. The indicator of the tablet is light yellow.
- 4 Then the graphics tablet can be used.



### Note:

- Be sure to connect the graphics tablet to the computer after the driver is installed, so as to avoid driver installation delays or errors during the identification of the hardware.

### LED Indicator Light

The LED indicator light on the graphics tablet can indicate the running state, as follows:

- When the graphics tablet is connected to the computer, the LED indicator is always half yellow light.
- When the pen is detected in the work area or the pen button is pressed, the LED indicator is highlighted in yellow.

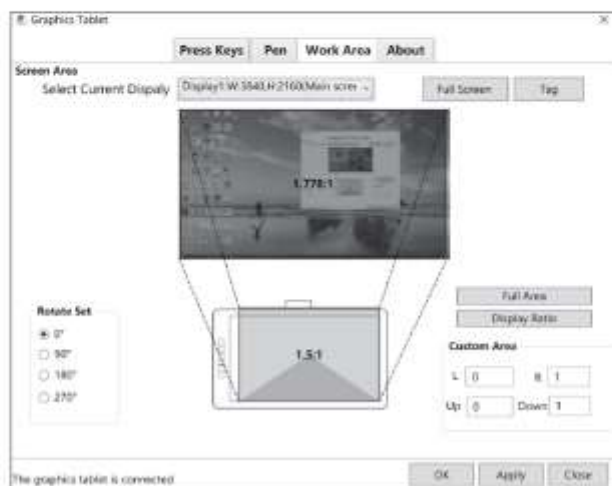




### 3. Settings in Windows

※ The operation procedure in Mac is similar to that in Windows

#### ① Work Area Settings

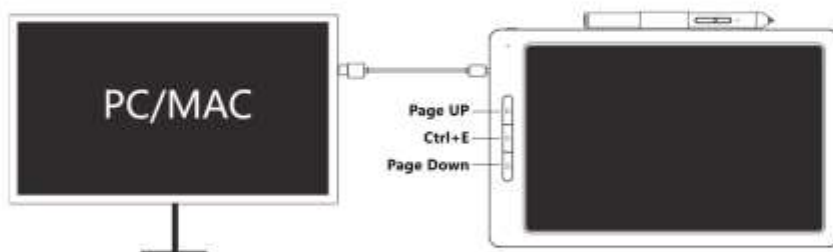


- Work area is the effective working area of handwriting on the tablet which corresponds to the mouse cursor working area on the monitor of computer.
- If there are more than one monitors, it will can reflect on each monitor in mirror mode.
- You need select the monitor you want to display with tablet in extend mode.
- Display Ratio: It means the effective handwriting area on the tablet is in same ratio with the monitor. But some area on the tablet may out of work. If you draw a circle in working area, it will display a circle on the monitor.
- Full Area: It means total work area on the tablet can work. But if the ratios are different between monitor and tablet, it may display a oval when you draw a circle on the tablet.
- Rotate Set : You can set the way to place the tablet according to your personal habit.



## ② Press Keys Settings

- Default Hotkeys: Press the button on the tablet and the computer displays the shortcut value. You can also view the default value of the hardware key by placing the cursor on the key or clicking the key icon.

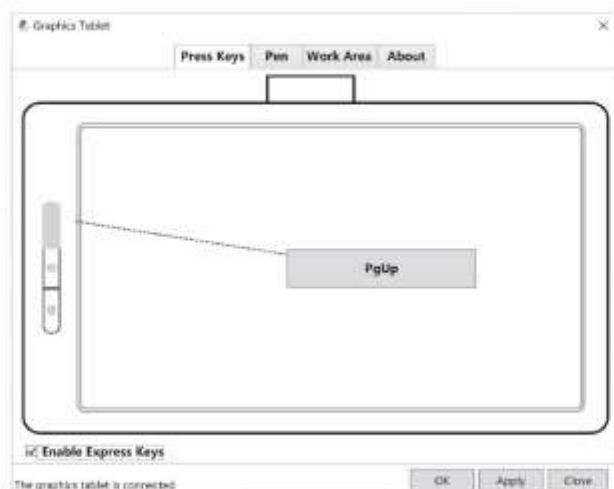


Customize the function of shortcut keys

- Click one key to enter the "Hotkeys" window as below. Set its function or select one as you want. Then click "Ok" to save the setting.

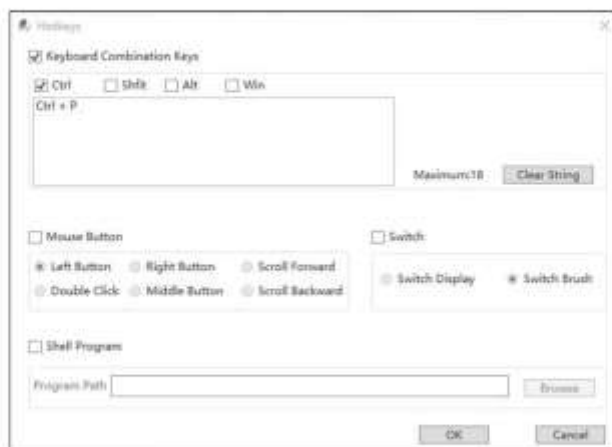
**eg: Ctrl+P is Pen function in PowerPoint full screen play. If need to set "PgUp" to "Ctrl+P" , please follow the below step.**

- a** Click "PgUp" and enter the hotkey setting interface.

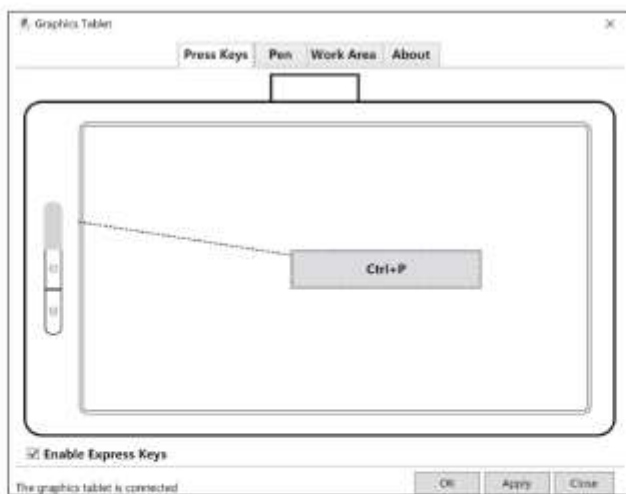




- b** Select “Ctrl” and input the letter “P” , and then click “OK”



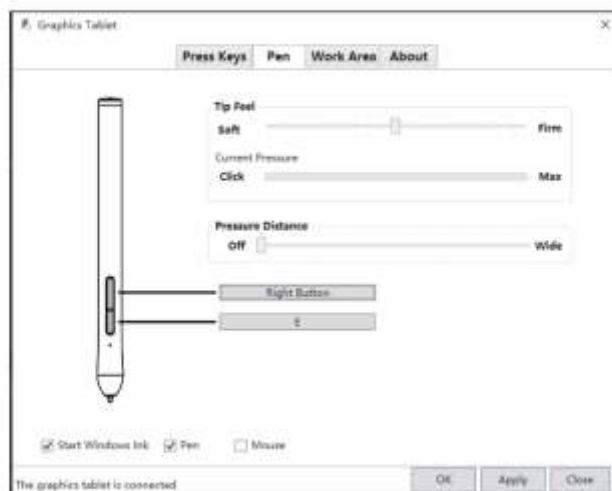
- c** Then click “OK” or “Apply” to take effect the hotkeys.



- Switch: It can help you to switch frame among multiple monitors.
- Shell: Add a application program in it. You can run the application quickly by pressing the shortcut key.



### 3 Pen Settings



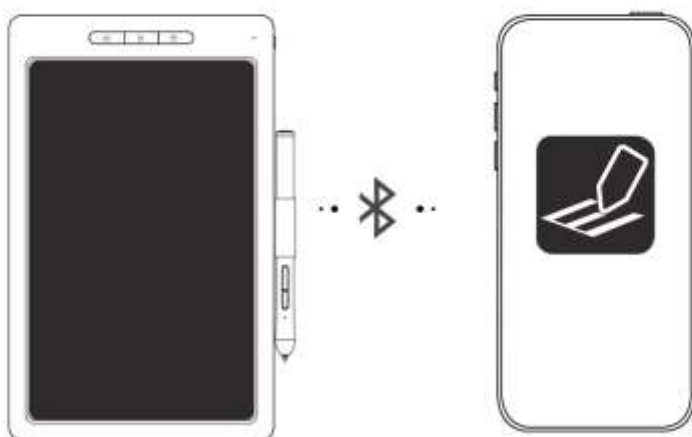
- The default function of the first button of the pen is letter "E", the function of second is the right button of mouse. You can customize their function.
- Under pen mode, The mouse cursor's location on the screen is the position of the pen. It will move with the pen moving on the working area on the tablet. This is the default setting.
- Under mouse mode, the pen can be used as the mouse.
- Tip Feel: Adjust the pressure sensitive between the pen and tablet.
- Current Pressure: Test the pen pressure value.
- Pressure Distance: Adjust the sensitive distance between the pen and tablet. It's easier to double click with wide distance.
- Start Windows Ink: This function is used with drawing or office software. Such as Adobe Photoshop, Sketchbook, Microsoft Office, etc.

### 4 About

- Import/Export: You can import or export your settings. Convenient for you to set the product with different software.
- Default setting: Back to the original settings.



### III. eDraw APP Quick Guide



#### 1. Download and install " eDraw " APP in your mobile phone

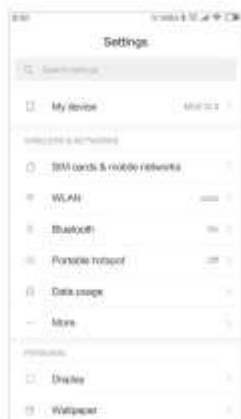
User can scan below QR or search "eDraw" in APP Store/Google Play to download.



( Android 4.3 or above and iOS 9.0 or above )



## 2. Bluetooth Connection, as follows



- a** Turn on your phone Bluetooth and network.



- b** Choose Equipment: Open the "eDraw" APP. Click the Menu bar "Equipment" -> "Draw".



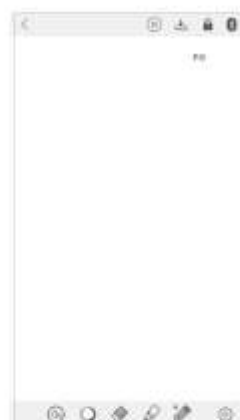
- c** New your work: Click "+" to add your works.



- d** New Handwriting drawing: Click "Handwriting drawing".



- e** Connect the device: "eDraw" APP will automatically scan the tablet and connected. When the indicator light highlights once, it means Bluetooth connected successfully.



- f** New canvas: Draw on the tablet, meanwhile it synchronizes on this drawing board.

### FAQ

**Q:** If fail to connect, how to do?

**A:** You can try below methods:

- 1) Reset the device by inserting a pin into the "RESET" hole for 3 seconds.
- 2) Remove the device from eDraw APP- About-My equipment.
- 3) Turn on your phone Bluetooth again.
- 4) Restart eDraw APP and make sure it is latest version.



## IV. Tablet Function Introductions

### **Power ON/OFF**

Press \*  \* for 3 seconds to power on/off.If USB connection please first unplug the cable , then power off.

- **Green indicator light:** normal work mode
- **Yellow indicator light:** USB connect to PC
- **Indicator light highlighting:** the pen is within the tablet work area

### **Sleep and awake**

Non USB connect, if out-of use for 1 hour, the tablet will go asleep and the indicator light goes off.


- Press any key to awake and the indicator light will be on.
- If no awake, it can write, but can not clear, track, store, Bluetooth and so on.

### **Erase Function**

Double click \*  \* , the red indicator flashes , empty the notes on the tablet.

- If the " **eDraw** " APP real time display drawing, meanwhile empty the notes on the APP.
- If USB connection, user need to manually empty notes on the PC.

### **Save Function**

Keep pressing "  " for 1 second till the red indicator flashes , save the notes , meanwhile empty the notes on the tablet.

- If the " **eDraw** " APP real time display drawing, it synchronized to APP;
- If USB connection, user need manually save your notes on the PC.
- If use tablet alone, it stores in the tablet and upload the next time connection " **eDraw** " APP
- When the tablet memory is full, the red and green indicator lights will alternate be on or under USB connected to PC the red and yellow indicator lights will alternate be on or the pen within the tablet work area, the red indicator lights will highlight. Please timely Synchronize your works to APP.



## V. Pen Function Introductions

### Sleep and awake

If out-of use about 5-7 minutes, the pen will go asleep. You can draw again to awake it.

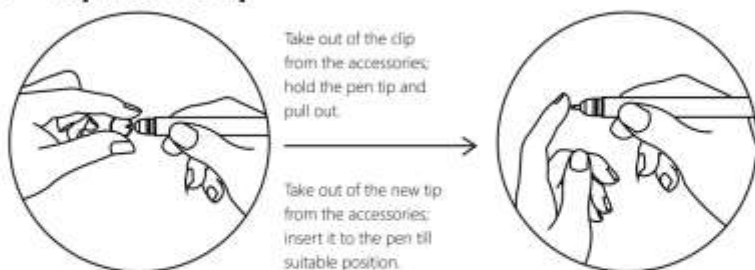
### Pen Touch

You can adjust handwriting thickness once connect to APP and the pen tip near the tablet screen (the pen tip cannot touch the tablet screen), Adjusting meanwhile drawing not supported simultaneously.

### Pen calibration method

- a** When the tablet is on, use the pen tip touch the tablet screen to make sure the pen is working;
- b** Hold the tablet three buttons at the same time until the red indicator light highlights, When loosen the button, the pen entering calibration status;
- c** Put the pen tip near the tablet screen as close as possible;
- d** If the red high light turns green it means the calibration is successful;
- e** If the red highlight becomes red highlighted flash five times, it means the calibration fails, please follow steps 1.2.3 and calibrate again.

### Replace the tip



## VI charging

**Charge for Tablet :** In power off mode , and connect one end of USB cable to the tablet charging port, the other end to PC. The red indicator light is on when charging; light will goes off when full charged.



**Note:**

Please charge first when the red indicator light blinks means low battery.

**Charge for Pen :** Unplug the silicon USB cover and connect one end of USB cable to the pen charging port, the other end to PC. The red indicator light is on when charging; light will go off when full charged.

**Caution :**

Do not disassemble, impact, or put it into fire. If there is severe bulging, please do NOT continue to use. Do not put it in high-temperature environment.

## VII. Product Parameter

Tablet Dimension : 256.0\*160.5\*11.7mm

Work Area : 215\*135mm

Tablet Weight : 335g

Tablet Capacity : 1000mAh

Input : 5V/1A

Charging Time : About 3-4 hours

Available time : About continuous use for 50 hours

Memory Storage : About continuous use for 8 hours

Pen Dimension : 138.3\*11.8mm

Pen Weight : 12g

Pen Capacity : 80mAh

Input : 5V/1A

Charging Time : About 2-3 hours

Available time : About continuous use for 200 hours

Induction Method : Electromagnetism

Pen Work Method : Forced induction

Connection Type : Bluetooth, USB

Induction Height : 10mm



## VIII. Q&A

Abnormal Occurrence	Solution
The tablet doesn't work	<ol style="list-style-type: none"><li>1) Make sure the tablet is powered on;</li><li>2) Make sure the pen is powered;</li><li>3) Make sure the driver is installed correctly; otherwise, please reinstall the driver</li><li>4) Reconnect the USB cable or replace the USB interface.</li></ol>
The pen doesn't work	<ol style="list-style-type: none"><li>1) Make sure your pen is fully charged;</li><li>2) Make sure that the pen you are using is compatible with the product. If not, please follow the pen calibration method before using</li><li>3) Make sure the driver is installed correctly</li></ol>
Keyboard shortcuts don't work	<ol style="list-style-type: none"><li>1) Make sure the shortcut function is enabled in the driver, and click ok or apply</li><li>2) Ensure the correct definition of key functions</li></ol>
No pressure in the drawing software	<p>You may have other brand of digital board driver on your computer, or you have opened the drawing software during the installation, and the files are not installed correctly into the system directory.</p> <p>Please uninstall other brands of digital board driver and close the drawing software, and then reinstall the driver. After the driver is installed, open the drawing software for use.</p>
Can't the computer go into sleep mode	Please do not place the pen on the surface of the tablet when you do not use it. This will keep the tablet awake.
The pen keys are not working	When pressing the pen keys, please make sure that if the pen tip touch the tablet surface, and the distance between the pen tip and the tablet surface is within 10mm.