

# BeaverPad



BeaverPad BP-1000 User Manual



## Product Overview

The BeaverPad BP-1000 is a two-in-one electronic device that functions as an LCD writing tablet, as well as a Graphics Tablet when connected to a computer. Packed with special features, the BP-1000 is an ideal note-taking tool – a viable alternative to pen and paper for students and professionals, and a powerful device for graphics designers, artists, and teachers, when used as a graphic tablet. Its lightweight and compact design makes it very easy to carry and use on the go. It is one of the few devices in the market that includes several special features such as write, erase, erase lock, save, built-in memory, Bluetooth connectivity, live synchronization, and file transfer. The BeaverPad comes with its own dedicated stylus pen with a special tip that allows users to write on the pressure sensitive flexible screen of the tablet using a multi-pressure writing technology - resulting in a very paper-like writing experience for the users.



# Table of Contents

- 1. Package Contents ..... 4
- 2. Product Introduction ..... 5
  - 2.1 Product View ..... 5
  - 2.2 Product Specifications ..... 6
- 3. How to Use as a Writing Pad (Android & iOS) ..... 8
  - 3.1 Getting started ..... 8
    - 3.1.1 Charging ..... 8
    - 3.1.2 Start up ..... 9
  - 3.2 Writing ..... 9
    - 3.2.1 Writing with power ..... 9
    - 3.2.2 Writing without power ..... 10
  - 3.3 Erase ..... 10
    - 3.3.1 Erasing ..... 10
    - 3.3.2 Erase Lock Mode ..... 10
    - 3.3.3 Partial Erase ..... 11
  - 3.4 Save ..... 11
    - 3.4.1 Built-in Memory ..... 11
    - 3.4.2 Save Button ..... 11
    - 3.4.3 File Format ..... 11
    - 3.4.4 File Resolutions ..... 11
    - 3.4.5 File Sizes ..... 12
    - 3.4.6 Saving Capacity ..... 12
  - 3.5 Bluetooth Connectivity ..... 12
    - 3.5.1 How to use Bluetooth ..... 12
    - 3.5.2 The eDraw App ..... 13
    - 3.5.3 Installing the eDraw app ..... 13
  - 3.6 Connecting the BeaverPad to your iOS or Android device ..... 15
    - 3.6.1 Connect using the 'iDraw' option ..... 15
    - 3.6.1 Connect using the 'iNote' option ..... 17
  - 3.7 Transferring files via eDraw app ..... 21

3.7.1 Transfer using the 'iDraw' option.....	21
3.7.1 Transfer using the 'iNote' option .....	23
3.8 Live Synchronizing via eDraw app.....	27
3.8.1 Synchronizing using the 'iDraw' Menu.....	27
3.8.2 Synchronizing using the 'iNote' Menu .....	31
3.9 Deleting the BeaverPad from eDraw app.....	36
4. How to Use as a Graphics Tablet (Windows & MacOS).....	38
4.1 Getting started .....	38
4.2 Connecting to a Windows or Mac computer .....	38
4.2.1 Using as a Mouse.....	39
4.2.2 Using as a Graphics tablet/ Drawing Device.....	39
4.3 Installing the driver .....	40
4.3.1 Windows.....	40
4.3.2 MacOS.....	41
4.4 Driver Configuration .....	41
4.4.1 Press Keys: configuring the tablet keys.....	42
4.4.2 Pen: configuring the stylus pen .....	44
4.4.3 Work Area .....	45
4.4.4 About .....	46
5. Troubleshooting.....	47
6. User Guidelines .....	47



# 1. Package Contents

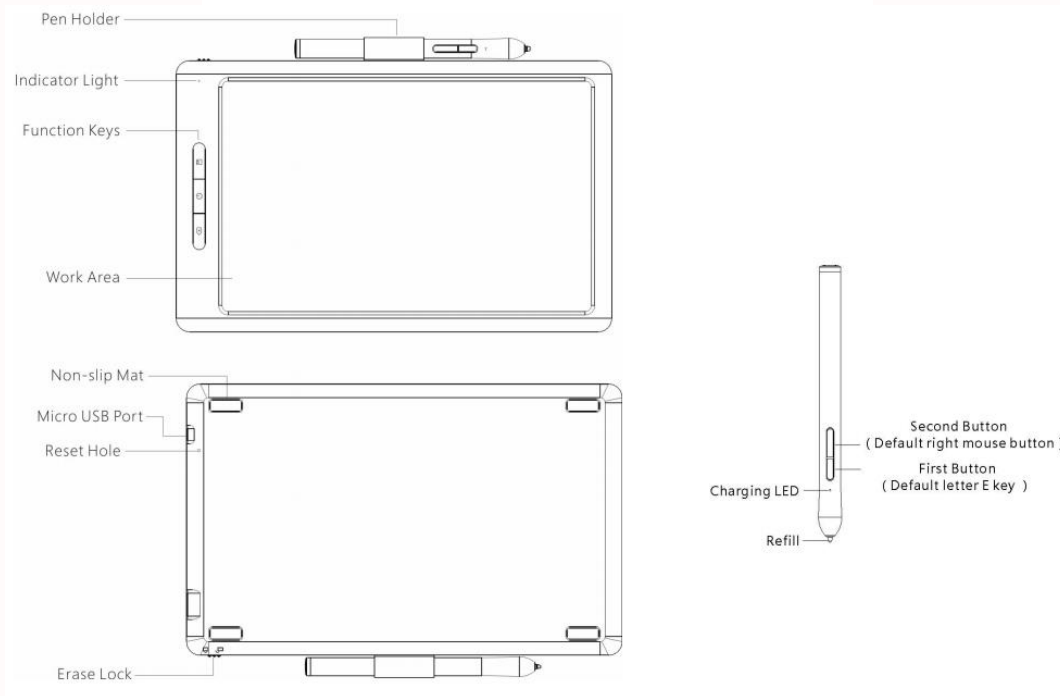
The BP-1000 package contains the following contents:

- 1 x LCD Writing Tablet
- 1 x Charging Cable
- 1 x Stylus Pen
- 3 x Replacement tips
- 1 x Replacement toolkit
- 1 x English User Manual



## 2. Product Introduction

### 2.1 Product View



## 2.2 Product Specifications

### **Manufacturing**

Item	BeaverPad LCD Writing Pad and Graphics Tablet
Material	Plastic
Colour	Grey/Black, Gold, and White
First Released	2020

### **Measurements**

Length	25.5 cm (10.0 inches)
Width	16 cm (6.3 inches)
Height	1.0 cm (0.4 inches)
Weight	310g

### **Display**

Screen Colour	Black
Screen Size	25.2 cm (10 Inches)
Screen Type	Flexible shatterproof plastic LCD
Writing/ Line Colour	Green

### **Writing Technology**

Induction Method	Electromagnetism
Induction Height	5~14mm
Pen Function Method	Forced induction

### **Memory**

Internal Memory (Tablet)	Yes
Memory Upgrade	Not Upgradable
Saving Capacity (Notes)	Approximately 500 pages on the tablet
Saving Capacity (Drawing)	Approximately 200 pages on the tablet
Saved File Format	.PNG

### **Connectivity**

Android Devices	Bluetooth and Micro USB
iOS Devices	Bluetooth and Micro USB
Windows Computers	Micro USB only
macOS Computers	Micro USB only
Charging	Micro USB to USB cable
Wi-Fi	Not Available
Input	5V/1A

### **Supported Platforms**

Operating System	Windows, macOS, iOS, and Android
Minimum Operating System Requirements	Windows 7, macOS 10, iOS 8.0, Android 4.3 or Above

### **Battery Life (Tablet)**

Battery Model	1 x CR2016 Button Cell (Included)
Removability	Non-removable
Battery Capacity	1000mAh
Charging Time	3-4 Hours
Usage Per Charge	50 Hours
Total Usage	100000 Saved Pages

### **Physical Buttons**

Total Buttons/Switches	5
Save	Yes



Power	Yes
Erase	Yes
Reset	Yes
Lock	Yes
<b><u>Software</u></b>	
Android	eDraw for Android
iOS	eDraw for iOS
Windows	Device Driver
macOS	Device Driver
Supported Applications	Adobe Photoshop, Illustrator, MS Paint, etc.
<b><u>Stylus Pen</u></b>	
Material	Plastic
Colour	Only Black
Length	14.0 cm (5.5 inches)
Diameter	1 cm (0.4 inches)
Weight	5g
Induction Method	Electromagnetism
Induction Height	5~14mm
Pen Function Method	Forced induction
Total Buttons/Switches	2
Button 1	Thickess up (only usable in the eDraw App)
Button 2	Thickess down (only usable in the eDraw App)
Connecting to the Tablet	Bluetooth
Charging	Charging: Micro USB only
Input	Input: 5V/1A
Compatibility	Only functions with the BeaverPad or other related models
Removability	Battery not removable
Battery Capacity	80mAh
Usage Per Charge	1-2 Weeks





## 3. How to Use as a Writing Pad (Android & iOS)

### 3.1 Getting started

Before you begin using your new device, you should always charge the tablet and the stylus pen. Once you have made sure that your tablet and the pen are both sufficiently charged, you may proceed to using the device.

#### 3.1.1 Charging

##### **Tablet**

Before charging, turn off the tablet by pressing the power key for 3 seconds.

To charge the tablet, use the Micro USB charging cable provided (or any generic Micro USB cable) to connect one end to the tablet and another end to any generic power adapter or any other source of USB power supply.

While charging, the red light will be on. Once fully charged the red light will automatically go off.

It takes 3-4 hours for the tablet to be fully charged.

##### **Stylus Pen**

To charge the pen, open the silicon USB cover and connect one end of the USB cable to the pen and another end to a USB power adapter or another source of USB power supply.

While charging, the red light will be on. Once fully charged the red light will automatically turn off.

It takes 2-3 hours for the pen to be fully charged.



## 3.1.2 Start up

### Power on (Tablet)

To start using your BeaverPad for writing or drawing, press the 'Power' button in the middle of the tablet for 3 seconds to turn the device on. That's it! Your tablet is ready to go. When the device is turned on, a green light will stay on at the top right corner of the tablet to indicate the active state of the tablet.

### Sleep Mode

The tablet will shut down automatically if it remains unused for an hour and the green light will turn off to indicate the tablet being shut down. To wake the tablet from automatic shutdown, press any of the three keys.

### Power Off

To manually shut down your tablet, press the 'Power' button for 3 seconds. To turn the tablet back on, press the 'Power' button for 3 seconds.

### Stylus Pen

The stylus pen will always stay on if it has minimum power on its battery, if left unused for 30 minutes it will go into sleep mode and can be awakened by holding the pen's tip close to the tablet's screen.

## 3.2 Writing

### 3.2.1 Writing with power

- Before you begin writing, turn the device on by pressing the power button for 3 seconds. This will light up the indicator light with a green light.



- There is no need to turn on the stylus pen as it always stays on.
- To begin writing, bring the tip of the pen close to the screen.
- This will cause the indicator light to turn from green to a brighter green – indicating successful detection of the sensors located in the stylus pen by the Pad and every stroke you take using the pen will now be recorded. You may now proceed with your writing or drawing.
- The BP-1000 has a pressure sensitive flexible screen that uses a multi-pressure forced induction writing technology. This means the thickness of the lines drawn would be directly responsive to the pressure applied by the stylus pen.

### 3.2.2 Writing without power

You may write on the tablet without having the tablet or the pen powered on. However, if you write without power, you won't be able to save your work inside the tablet's memory, or use any other features such as Bluetooth or USB connectivity.

## 3.3 Erase

### 3.3.1 Erasing

If you are not satisfied with something you have written on the screen, you may erase the page and start over by clicking the 'back' button twice. This will give you a new blank page.

### 3.3.2 Erase Lock Mode

To avoid accidental erase, use the key on the right side of the tablet to switch it to 'Locked Mode'. This will prevent you from erasing anything that's on the screen even if you press the 'Erase' button. To turn off the 'Locked Mode', simply switch the key back to 'Unlocked mode', and you will again be able to erase the screen by pressing the erase button twice.



### 3.3.3 Partial Erase

The BP-1000 is designed to function like a pen on paper instead of a pencil. Hence, it does not come with a partial erase function. That means if you make a mistake or want to change something partially over what you have written or drawn, you will have to erase the whole page and get a new page.

## 3.4 Save

### 3.4.1 Built-in Memory

The BP-1000 comes with an 8MB built-in memory inside the tablet file storage. This allows you to use the tablet to save your work within the device offline without the need of internet or Bluetooth connection.

### 3.4.2 Save Button

Once you are happy with your work, you may press and hold the save button for 3-5 seconds. This will immediately save your work inside the tablet's built-in memory, and give you a fresh blank page to work with.

### 3.4.3 File Format

When you press the 'Save' button your work is saved inside the tablet's memory. Later, when you transfer the file to an Android or iOS device using the eDraw app, the files will be saved as PNG files.

### 3.4.4 File Resolutions

The resolution of the PNG image files saved and transferred will depend on the resolution of the screen of your Android or iOS device that you are using to transfer your files via the eDraw app. A larger screen with a higher resolution will save the files with higher resolution and greater



sizes. For example, if you use an Android device with a screen resolution of 720 x 1440 pixels, your saved file's resolution will be much smaller than using an iPhone with 1080 x 1920 pixels.

### 3.4.5 File Sizes

The size of the file is depended on the level of detail of your image – the more details your images contain, higher will be your file sizes. For example, a shopping list with 6 words will be significantly smaller in size compared to a sketch with rigorous details. The actual digitized size of your file will also vary depending on the screen resolution of the Android or iOS device that you are using to save your files with the eDraw app.

### 3.4.6 Saving Capacity

The number of files you can save inside the device's memory will depend on the size/details of each file saved. You can save roughly up 200 pages of drawings/sketches with heavy details, and approximately 500 pages of notes.

When the maximum capacity of the memory storage is reached, the indicator light will switch from green to red, and you will no longer be able to save anything inside the memory. You will still be able to write and erase on new pages.

## 3.5 Bluetooth Connectivity

### 3.5.1 How to use Bluetooth

The BP-1000 is equipped with the energy efficient Bluetooth 4.0. This allows you to connect your BeaverPad to any Android or iOS devices with the help of the eDraw app. Please note that the BP-1000 Bluetooth connectivity is designed only to function with the eDraw app, your Android or iOS device may identify the BeaverPad via Bluetooth but it will not connect or pair successfully without the eDraw app. You are also advised to use the BeaverPad only with the eDraw app as it may not be fully compatible with other apps with similar functions.



### 3.5.2 The eDraw App

The eDraw app is required to connect the BeaverPad to your Android or iOS devices via Bluetooth. The app will allow you to transfer your files saved on the BeaverPad and synchronize your writings and drawings directly from the BeaverPad to your Android or iOS devices. The eDraw app has 2 different options to use with the BeaverPad – ‘iDraw’, and ‘iNotes’. The ‘iDraw’ option is intended for painting or drawing; it allows users to draw and save their work from the BeaverPad to their Android or iOS device via Bluetooth file transferring or live synchronization. Files transferred or saved using the ‘iDraw’ option are all stored in one folder within the eDraw app. The ‘iNote’ option, on the other hand, is intended for saving notes. This option will allow users to save and store their notes into different folders within the gallery of the eDraw app.

### 3.5.3 Installing the eDraw app

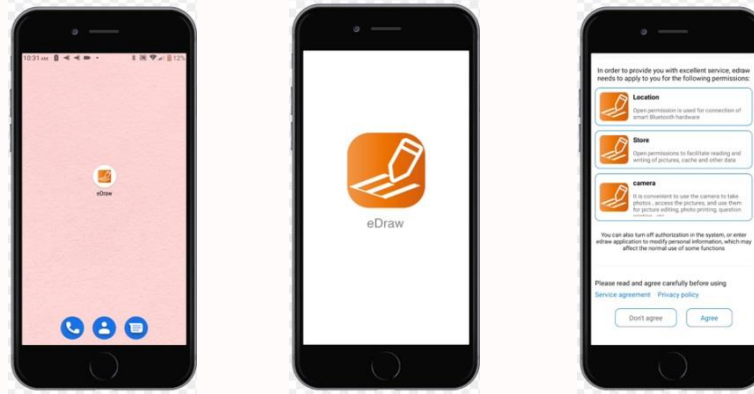
- To download the eDraw app for Android, search ‘eDraw’ on the Google Play, or scan the following code:



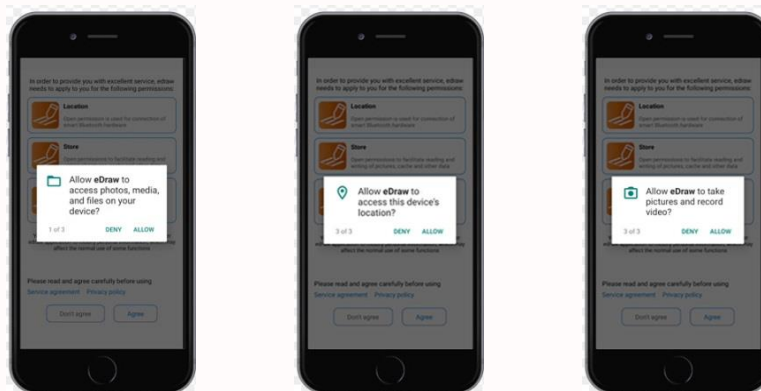
- To download the eDraw app for iOS, search ‘eDraw’ on the Apple App Store, or scan the following code:



- Install the eDraw app on the Android or iOS device that you're going to use with the BeaverPad and open the app.
- When you open the eDraw app for the first time after a new installation, you will be presented with a service agreement and privacy policy, please have a read and agree to the terms.



- You will also be asked for permission for the eDraw app to 'access your photos, media, and files on your Android or iOS device', 'take pictures and record video', and 'access location' of your Android or iOS device. In order to be able to use the eDraw app, please select 'allow' to all of the requests.

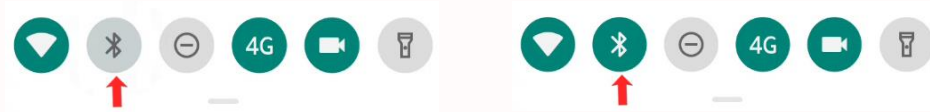


- Your eDraw app is now ready to use.



### 3.6 Connecting the BeaverPad to your iOS or Android device

- Once you are done with installation and setup of the eDraw app, please make sure the Bluetooth of your Android or iOS device is turned on, and open the app.



- In the first screen, you will be presented with three options – ‘iDraw’, ‘iNote’, and ‘mini printer’. Please select ‘iDraw’ or ‘iNote’ from this screen.

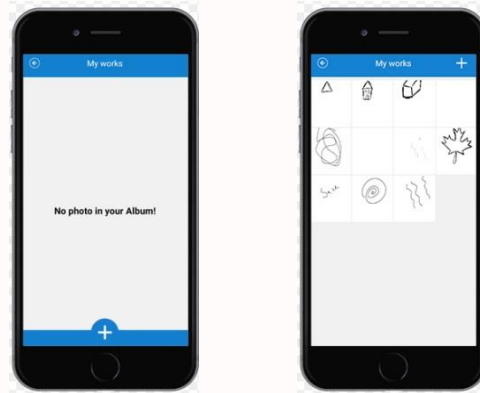


#### 3.6.1 Connect using the ‘iDraw’ option

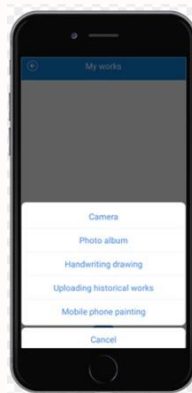
- If you have selected the ‘iDraw’ option, this will take you to the following screen titled ‘My works’. This is your gallery where all your files are stored. Please select the ‘+’ button from this screen. If you are using the app for the first time your gallery will be empty and the ‘+’ button will be located at the bottom, and if you have files stored on your gallery, the ‘+’ button will be located at the top right corner.







- This will open up a new menu with a number of options for you – ‘Camera’, ‘Photo album’, ‘Handwriting drawing’, ‘Uploading historical Works’, and ‘Mobile phone painting’. Please select, either ‘Handwriting drawing’ or ‘Uploading historical Works’.



- The eDraw app will now begin scanning for the BeaverPad.



- If the eDraw app is successful in finding the BeaverPad you will be prompted with a message to select the newly detected device. Please select the device by tapping on it.



- If the connection is successfully established, you will be provided with a message – 'Device connection successful', and taken to the screen for 'Handwriting drawing' or 'Uploading historical works' depending on what you have chosen.



### 3.6.1 Connect using the 'iNote' option

- To connect the BeaverPad using the 'iNote' option of the eDraw app, please select the 'iNote' button from the first screen.





- This will take you to a new screen titled 'My notes'. This is your gallery for all your saved notes. Please select the '+' button.



- This will prompt a new window asking you to provide a name. Let's give your new folder the name 'New Notes' and tap confirm.



- You will then be taken back to your gallery screen titled 'My notes'. Here you can see the new folder you just created named 'New Notes'. Please tap to select this folder.

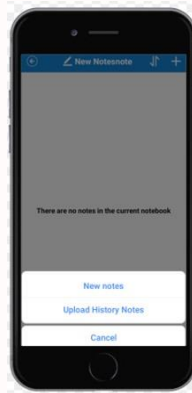


- This will take you inside the folder 'New notes'. Please select the '+' button on the top right corner of this screen.



- You will now be prompted with the options 'New notes' and 'Upload History Notes'. Please select any one of those two options.





- The eDraw app will now begin scanning for the BeaverPad.



- If the eDraw app is successful in finding the BeaverPad you will be prompted with a message to select the newly detected device. Please tap to select the device.



- If the connection is successfully established, you will be provided with a message – ‘Device connection successful’, and be taken to the screen for ‘New notes’ or ‘Upload History Notes’ depending on what you have selected.

### 3.7 Transferring files via eDraw app

Please write or draw something on the BeaverPad and save your work using the save button.

Your writing or drawing will now be saved inside the BeaverPad’s built-in memory. You can transfer this file to your phone using the eDraw app. You can achieve this by using the ‘iDraw’ or the ‘iNotes’ option.

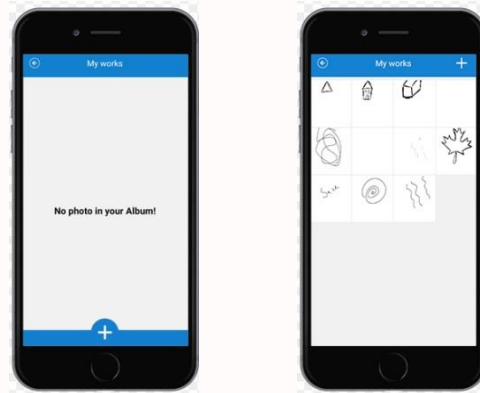
#### 3.7.1 Transfer using the ‘iDraw’ option

- Open the eDraw app.
- In the first screen, you will be presented with three options – ‘iDraw’, ‘iNote’, and ‘mini printer’. Please select ‘iDraw’ from this screen.



- If you have selected the ‘iDraw’ option, this will take you to the following screen titled ‘My works’. Please select the ‘+’ button from this screen. If you are using the app for the first time, your gallery will be empty and the ‘+’ button will be located at the bottom, and if you have files stored on your gallery, the ‘+’ button will be located at the top right corner.





- This will open up a new menu with a number of options for you – ‘Camera’, ‘Photo album’, ‘Handwriting drawing’, ‘Uploading historical Works’, and ‘Mobile phone painting’. Please select, ‘Uploading historical Works’ to transfer files saved on the BeaverPad.
- This will immediately begin uploading your files from the BeaverPad to your Android or iOS device.
- When all files are successfully transferred, you will be prompted with the message – ‘All historical works are uploaded, please save the works you need’.
- You can select or deselect the files by clicking the circled tick button located to the left of every file.
- Now, tap the Save icon at the top right corner of the screen next to the Bluetooth icon.
- This will save all your selected files inside your Android or iOS device.
- When the task of saving is completed, you will be automatically taken to the gallery titled ‘My works’.
- Here you will see the thumbnail of the file that you just uploaded. Tap the thumbnail to open and view this file. This file can also be accessed directly on your Android or iOS device’s hard drive located in the eDraw folder.
- You can now easily transfer/share this file to other devices using your Android or iOS device’s sharing options.



### 3.7.1 Transfer using the 'iNote' option

- Write something on the BeaverPad and save it using the 'Save' button.
- Open the eDraw app.
- In the first screen, you see three options – 'iDraw', 'iNote', and 'mini printer'. Please select 'iNote' from this screen.



- This will take you to the following screen titled 'My notes'. This is your gallery of notes where all the notes are saved. If you are using the app for the first time, your gallery will be empty.



- Please tap the '+' button inside the notebook icon from this screen to create a new notebook folder within the gallery.





- You will be prompted with a message to enter a name for your notebook folder. Choose any name of you prefer and tap confirm. For this example, we are going to name our folder 'New notes'.



- You will now notice that a new notebook folder named 'New notes' has been created in the gallery.

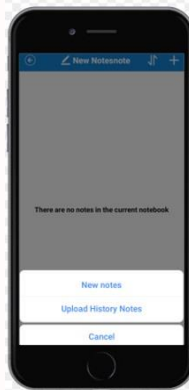


- Tap the folder's icon to enter the folder.
- Inside the folder, please tap the '+' icon at the top right corner.

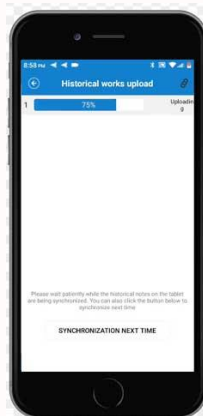




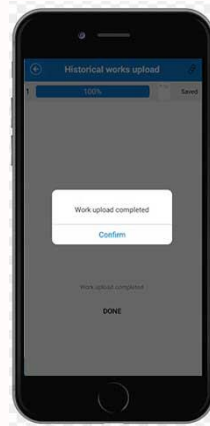
- This will bring up the following options – ‘New notes’, and ‘Upload history notes’.



- Please tap ‘Upload history notes’ to transfer any files saved on the BeaverPad tablet to your Android or iOS device.



- Once the file transfer is complete you will receive a message on the screen – ‘Work upload completed’.



- If you go back to the notebook folder, you will now see the file you just transferred. You can now easily transfer/share this file to other devices using your Android or iOS device's sharing options.



- This file can also be accessed directly on your Android or iOS device's hard drive located in the eDraw folder.



### 3.8 Live Synchronizing via eDraw app

After connecting the BeaverPad with your Android or iOS device using the eDraw app, you can write or draw on the BeaverPad and synchronize your writing or drawing on to your Android or iOS device in real time. That means, whatever you write or draw on the screen of the BeaverPad will be replicated on your Android or iOS device's screen in real time.

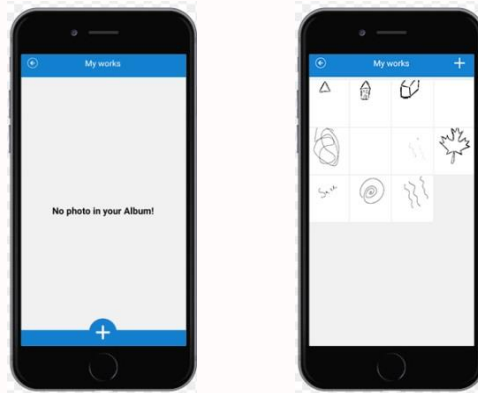
#### 3.8.1 Synchronizing using the 'iDraw' Menu

- Turn on the BeaverPad and place your Android or iOS device near the pad and the stylus pen.
- Open the eDraw app.
- In the first screen, you will be presented with three options – 'iDraw', 'iNote', and 'mini printer'. Please tap 'iDraw' from this screen.

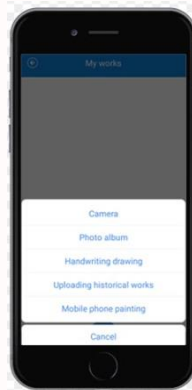


- If you have selected the 'iDraw' option, this will take you to the following screen titled 'My works'. Please select the '+' button from this screen.





- This will open up a new menu with a number of options for you – ‘Camera’, ‘Photo album’, ‘Handwriting drawing’, ‘Uploading historical Works’, and ‘Mobile phone painting’. Please select, ‘Handwriting drawing’.

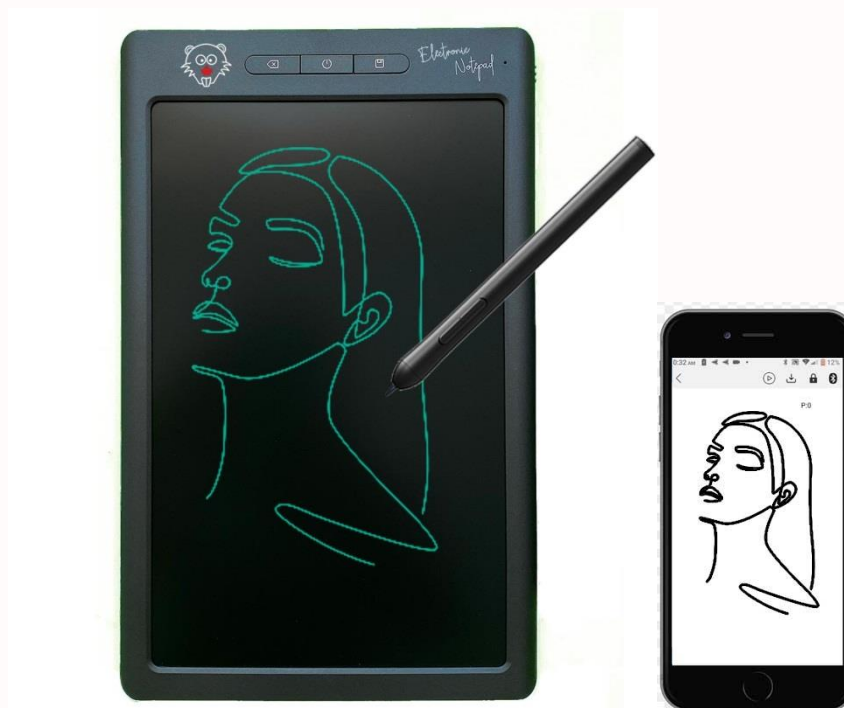


- The eDraw app will connect automatically with the BeaverPad and open up a blank drawing canvas.

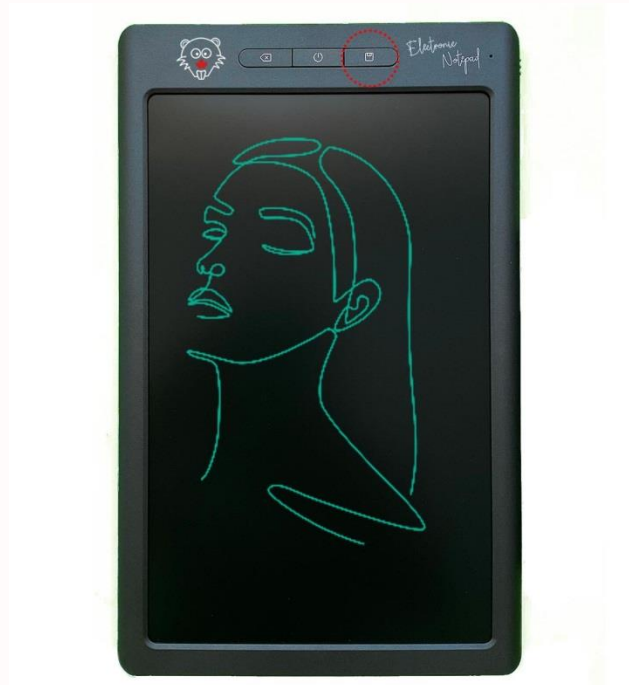





- To initiate live synchronization, please bring the tip of the stylus pen close to the screen of the BeaverPad without touching the screen. You will soon see a cursor appear on the canvas of the eDraw app with the shape of a plus (+) sign. This means your Stylus pen has been recognized and calibrated and you are ready to write in synchronization.
- Now, if you write or draw something on the screen of the BeaverPad, you will see it being synchronized on the screen of the eDraw app.



- When you are done with your work, please press the save button on the BeaverPad for 3 seconds.



- This will save your drawing directly on the eDraw app's gallery and give you a fresh blank canvas on the eDraw app, and a fresh blank page on the BeaverPad's screen.
- You may also save your work by tapping the save icon  on the eDraw app's canvas. But with this method, the drawing will not be erased from the BeaverPad's screen.





- Now, if you go back to the gallery of the 'iDraw' menu, you will see the drawing you just saved.



### 3.8.2 Synchronizing using the 'iNote' Menu

- Turn on the BeaverPad and place your Android or iOS device near the pad and the stylus pen.
- Open the eDraw app.





- In the first screen, you will be presented with three options – ‘iDraw’, ‘iNote’, and ‘mini printer’. Please tap ‘iNote’ from this screen.



- This will take you to the gallery titled ‘My notes’. If you are using the app for the first time, your gallery will be empty. Please create a new notebook folder and tap to enter the folder. Or, if you have any existent folders tap to enter any one of them.

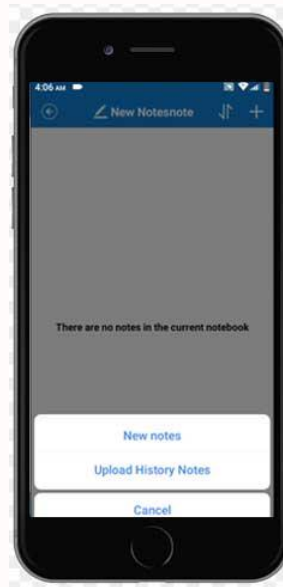


- Now you will be taken inside the folder you have chosen. From here, tap on the ‘+’ icon at the top right corner of the screen.





- You will then be prompted with 2 options – ‘New notes’, and ‘Upload history notes’. Please tap on ‘New notes’.



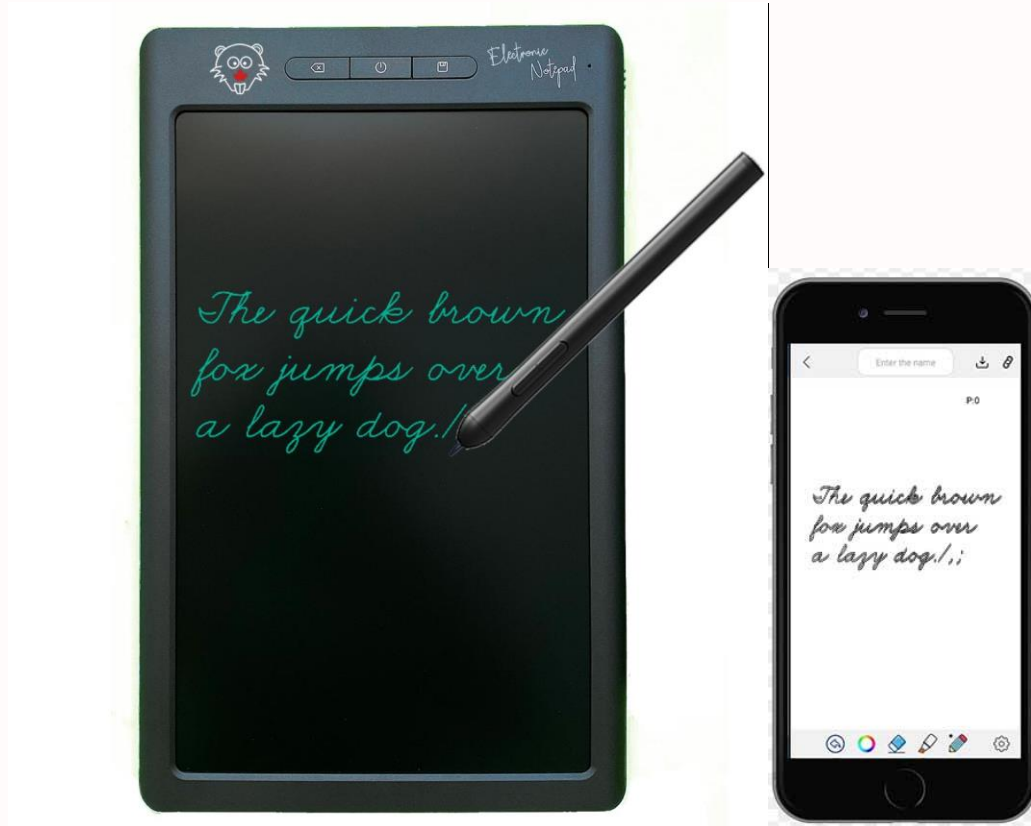
- This will cause the eDraw app to connect with the BeaverPad and open up a blank sheet for you. There is also an option to give this page a name at the top.






- To initiate live synchronization, please bring the tip of the stylus pen close to the screen of the BeaverPad without touching the screen. You will soon see a cursor appear on the canvas of the eDraw app with the shape of a plus (+) sign. This means your Stylus pen has been recognized and calibrated and you are ready to write in synchronization.
- Now, if you write or draw something on the screen of the BeaverPad, you will see it being synchronized on the screen of the eDraw app.





- When you are done with your work, please press the save button on the BeaverPad for 3 seconds. This will save your drawing directly on the eDraw app's gallery and give you a fresh blank canvas on the eDraw app, and a fresh blank page on the BeaverPad's screen. If you haven't given this sheet a name, you will be prompted to give it a name or allow the app to produce one for you.
- You may also save your work by tapping the save icon  on the eDraw app's screen. But with this method, the drawing will not be erased from the BeaverPad's screen.
- Now, if you go back to the folder of the 'iNotes' menu, you will see the notes you just saved.





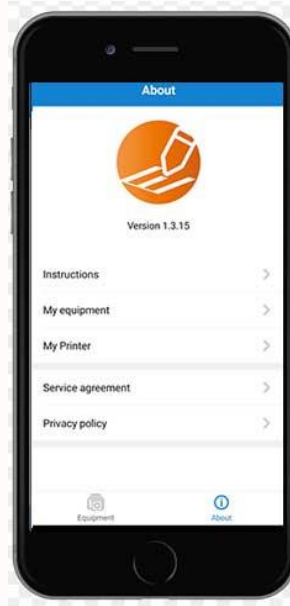
### 3.9 Deleting the BeaverPad from eDraw app

- To delete the BeaverPad from the eDraw app for troubleshooting or any other purposes, open the eDraw app and tap on 'About' button on bottom right corner of the screen.

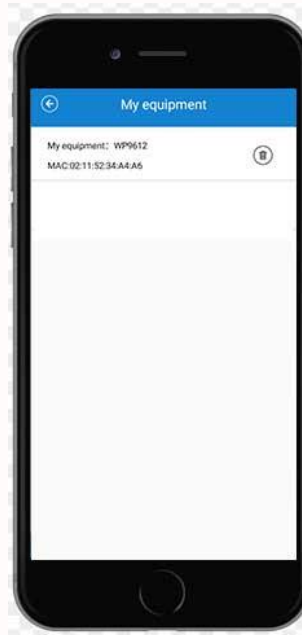


- From here, please tap on 'My equipment'.





- This will take you to a page that will show all the devices connected to your Android or iOS device on the eDraw app.



- You can delete a device here by tapping the delete icon to the right of each device listed.



## 4. How to Use as a Graphics Tablet (Windows & MacOS)

### 4.1 Getting started

The BeaverPad can be used as a Graphics Tablet when connected to a Windows or Mac computer using the USB cable. Before you begin using your new device, you should always charge the tablet and the stylus pen. Once you have made sure that your tablet and the pen are both sufficiently charged, you may proceed to using the device.

### 4.2 Connecting to a Windows or Mac computer

- To connect the BeaverPad to your windows or Mac Computer, please connect the micro USB plug to the port allocated on the BeaverPad, and the USB plug to any available USB port on your computer.

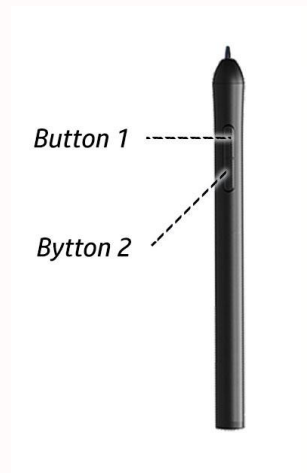


- If your connection is successful, you will hear a sound from your operating system for a new device connection.

#### 4.2.1 Using as a Mouse

You should now be able to use the BeaverPad as a mouse as is. To use it as a mouse, bring the tip of the stylus pen close to the screen of the BeaverPad (without touching the screen), and the cursor on your computer will navigate throughout the computer screen in response to your stylus pen's movement across the BeaverPad's screen.

#### Shortcuts for using as a Mouse:



Single Click: Press Button 1 once or tap the screen with the tip of the pen once

Double Click: Press Button 1, or tap the screen with the tip of the pen twice

Right Click: Press Button 2 once

#### 4.2.2 Using as a Graphics tablet/ Drawing Device

The BeaverPad will work as a Graphics Tablet with any Windows or Mac application program that supports freehand writing or drawing. To use as a Graphics tablet, open a compatible application and prepare it for your writing or drawing, and begin your work by writing on the





BeaverPad with the stylus pen. Everything you write or draw will be replicated on your computer's program window.



## 4.3 Installing the driver

The BeaverPad does not require the driver program installed to be used as a Graphics Tablet, but the driver will provide more options for customization and enhance your user experience.

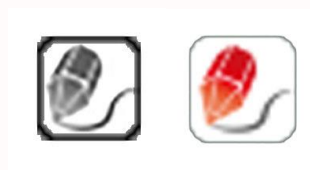
### 4.3.1 Windows

- To download the windows driver program, please visit, <https://beaverpad.ca/downloads.html>
- Once downloaded, please install the driver from the downloaded file.
- Restart your computer if you are prompted.
- If your installation is successful, you will see an icon in the notification area of your task bar.





- If the driver application doesn't open automatically, please open it by clicking 'Graphics Tablet' from the program menu.
- If it isn't already connected, please connect the BeaverPad to configure your driver settings. When your BeaverPad is connected the driver icon will be colourful, and when it's disconnected the icon will be greyed out.



#### 4.3.2 MacOS

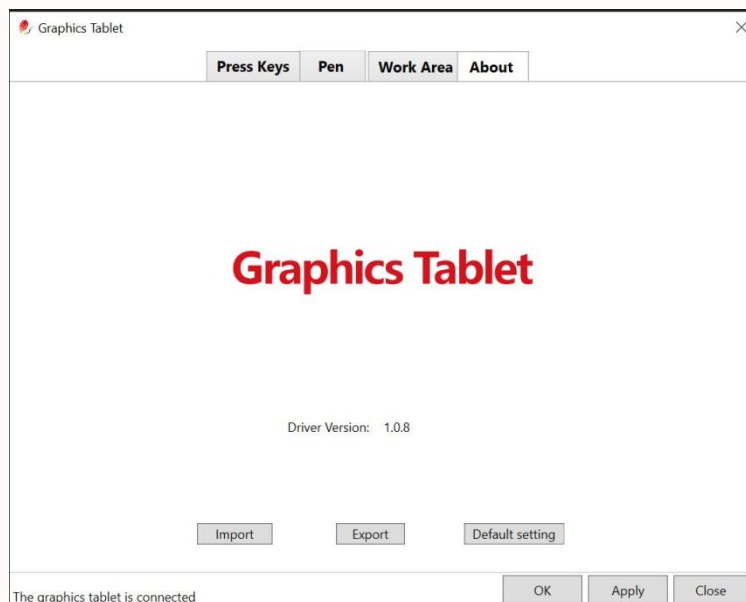
- To download the MacOS driver app, please visit, <https://beaverpad.ca/downloads.html>
- Once downloaded, please install the driver from the downloaded file.
- Restart your computer if you are prompted.
- If your installation is successful, you will be able to see the driver app in your launch folder.
- If it isn't already connected, please connect the BeaverPad to configure your driver settings. When your BeaverPad is connected the driver icon will be colourful, and when it's disconnected the icon will be greyed out.

## 4.4 Driver Configuration

The driver program has 4 tabs including as follows:



- **Press Keys:** allows you to customize the buttons on the BeaverPad Tablet.
- **Pen:** allows you to customize the buttons on the stylus pen, as well as configure properties such as strength of the tip feel, and pressure distance.
- **Work Area:** allows you to configure your work area, display ratio, etc.
- **About:** contains driver version information, and allows you to import and export your configuration as well as revert back to default setting.

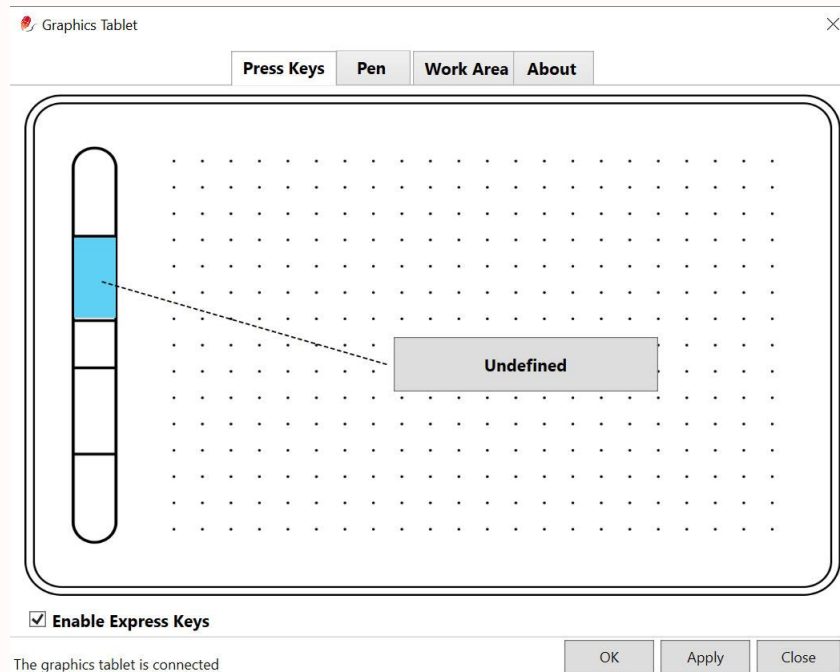


#### 4.4.1 Press Keys: configuring the tablet keys

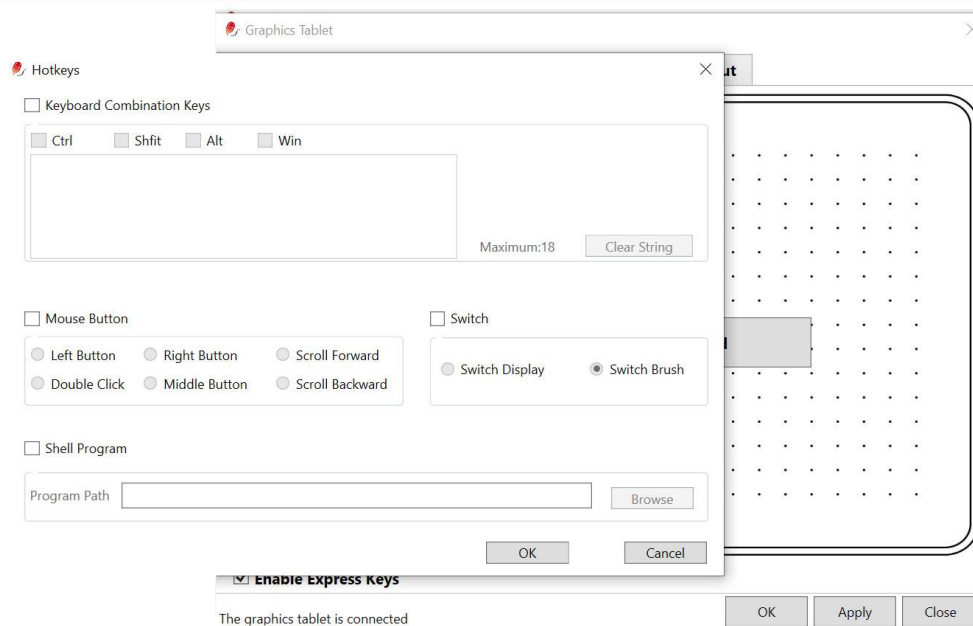
The first tab is called 'Press Keys'. In this tab you can customize the keys on the BeaverPad assign your preferred keyboard or mouse shortcuts to use it on your Windows or Mac OS, as well as any applications such as MS Word, Photoshop, etc.

This driver application supports customization of up to 5 keys, but since the BeaverPad only has 3 keys you can only customize 3 keys in the middle shown the driver application. The three keys on the BeaverPad are Save, Power, and Back and when no shortcuts are assigned, the driver recognizes them Key2, Key3, and Key4 respectively when pressed.





- To customize a key with your own shortcut, click on the key. On a new installation, the key will be 'Undefined'.
- Please click on the 'Undefined' button.

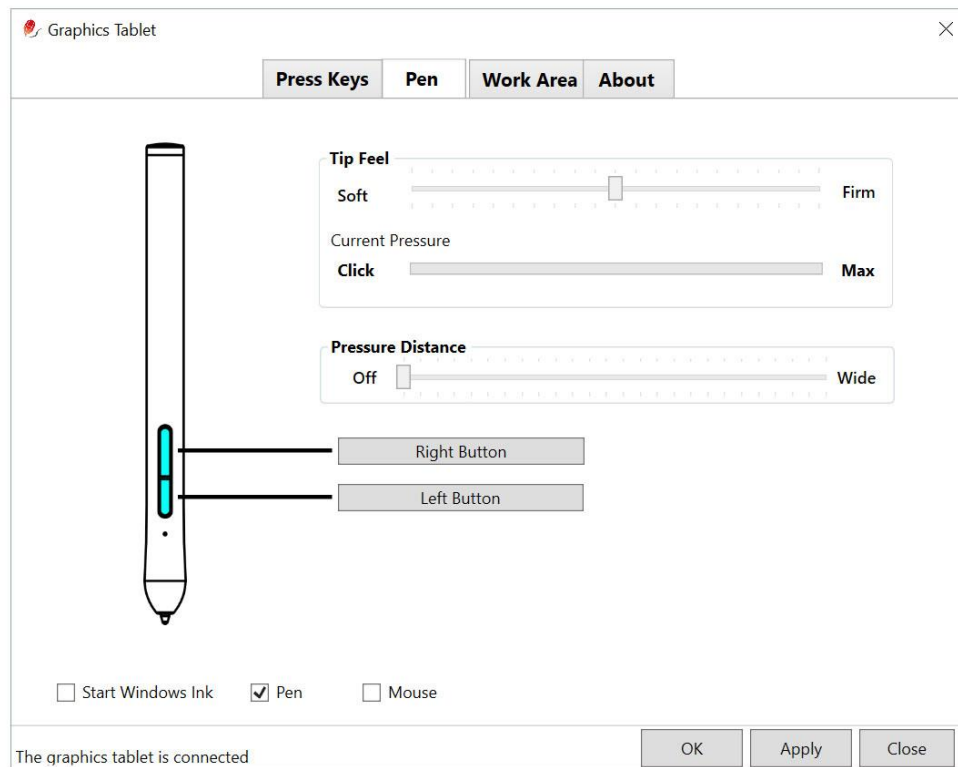


- This will open up a new window titled 'Hotkeys'. From this window, you can assign any shortcut to each of the keys.
- For this tutorial, we will try to assign a keyboard shortcut of 'E' to the button that is second from the top (Key2). 'E' is the default shortcut for Eraser on Photoshop.
- To do this, Click on the area under keyboard section and type in 'E'. You can also add 'Ctrl', 'Shift', 'Alt', and 'Win' by selecting them when needed.
- Now click OK.
- The 2<sup>nd</sup> button from the top will now function as a shortcut for 'E'.
- Now, if you open Photoshop, draw a few lines using the pen and press the 'save' button on the BeaverPad.
- This will enable the Eraser function immediately and your stylus pen will function like an eraser.
- To go back to drawing, select a pencil or brush to stop erasing and return to your drawing.

#### 4.4.2 Pen: configuring the stylus pen

To configure the pen, please select the 'Pen' tab. You may use the pen as a 'Mouse', 'Windows Ink' or 'Pen' by selecting one of the three options at the bottom of this window. You can also configure the level of Tip Feel and Pressure Distance from this window. And finally, you can assign shortcuts to the two buttons on the pen using the same method described above.

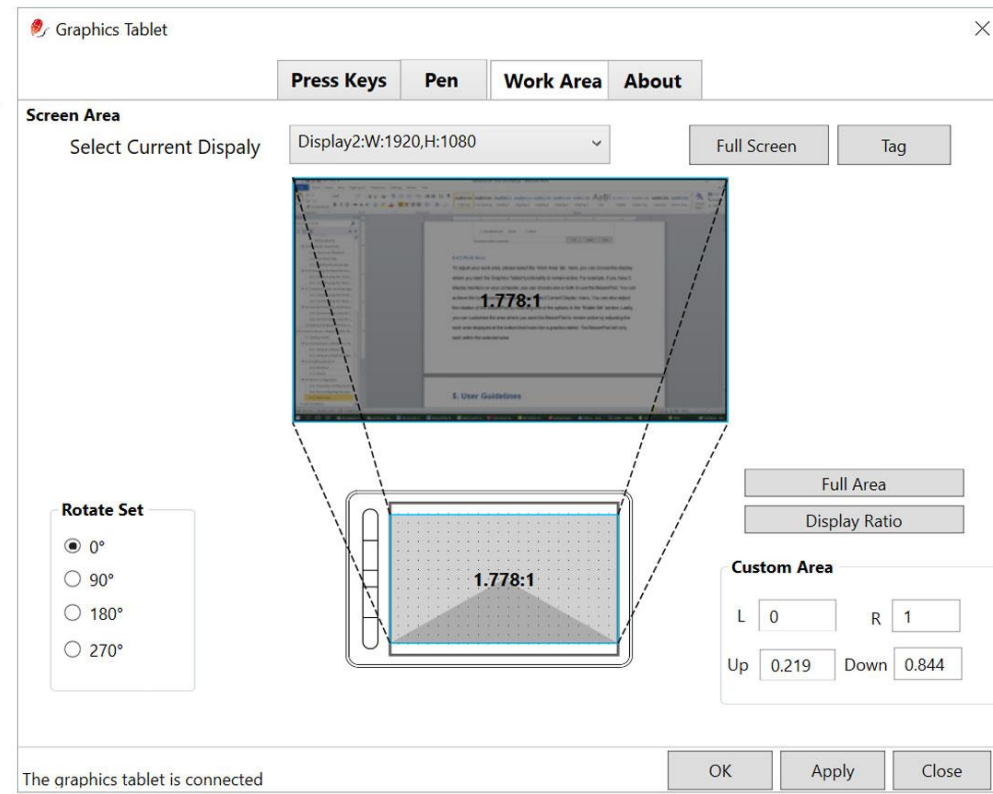




#### 4.4.3 Work Area

To adjust your work area, please select the 'Work Area' tab. Here, you can choose the display where you want the Graphics Tablet functionality to remain active. For example, if you have 2 display monitors on your computer, you can choose one or both to use the BeaverPad. You can achieve this by choosing the display from 'Select Current Display' menu. You can also adjust the rotation of the BeaverPad by selecting one of the options in the 'Rotate Set' section. Lastly, you can customize the area where you want the BeaverPad to remain active by adjusting the work area displayed at the bottom that looks like a graphics tablet. The BeaverPad will only work within the selected area.





#### 4.4.4 About

To go to about section by selecting the 'About' tab, here you will find version information of the driver application. The about section has 3 main options including Import, Export, and Default setting.

Default Setting – this options will allow you to go back to default setting, and all your customization will be removed. To go initiate default setting, please click on the 'Default setting' button, and this will prompt up a message asking you to confirm. If you want to proceed please click 'Yes', otherwise, click 'No'.

Export – this option lets you save your configurations and customized shortcut keys. To use this feature, click on the 'Export' button and save your file with a preferred name. The file will be saved as an XML file.



Import – with this option you can restore a previously saved configuration setup by importing your previously saved XML files. To do that, please click on the ‘Import’ button, and import your saved XML file, and your previously saved configuration will be restored.

## 5. Troubleshooting

If you experience difficulties such as Bluetooth connectivity issues, synchronizing problems, or lags, please take the following actions.

- Make sure both the BeaverPad and the stylus pen are adequately charged.
- Remove the device from the eDraw app, and close the eDraw app
- Delete all the data from the eDraw app, uninstall and reinstall the eDraw app if necessary
- Connect the BeaverPad to the eDraw app again and everything should function normally

## 6. User Guidelines

To maximize the longevity of your BeaverPad we recommend the following standard of practices:

- Always use and store the BeaverPad near normal room temperature
- Always use and store the BeaverPad in a dry environment
- Keep away from water or any liquid substances as the BeaverPad and its stylus pen are not designed to be waterproof
- Avoid dropping or heavy impact
- Avoid scratching the screen with sharp objects





